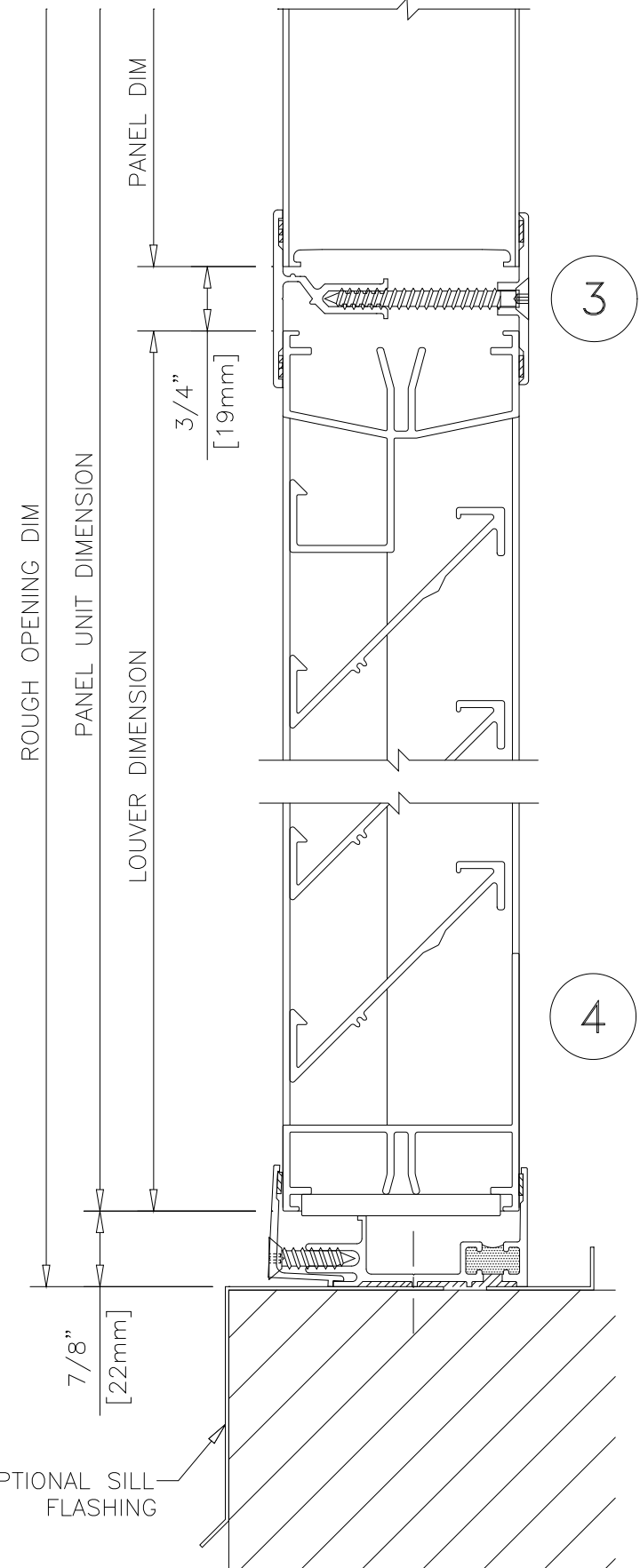
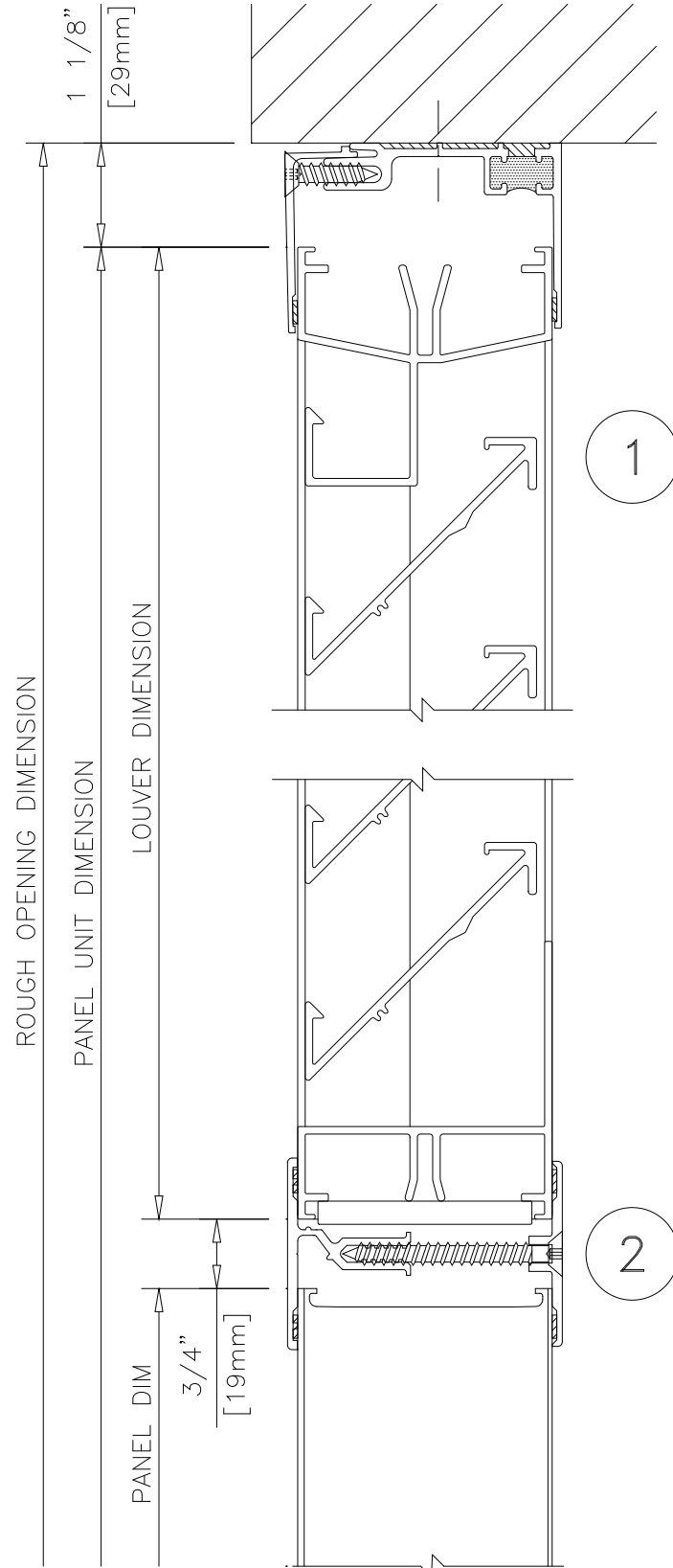
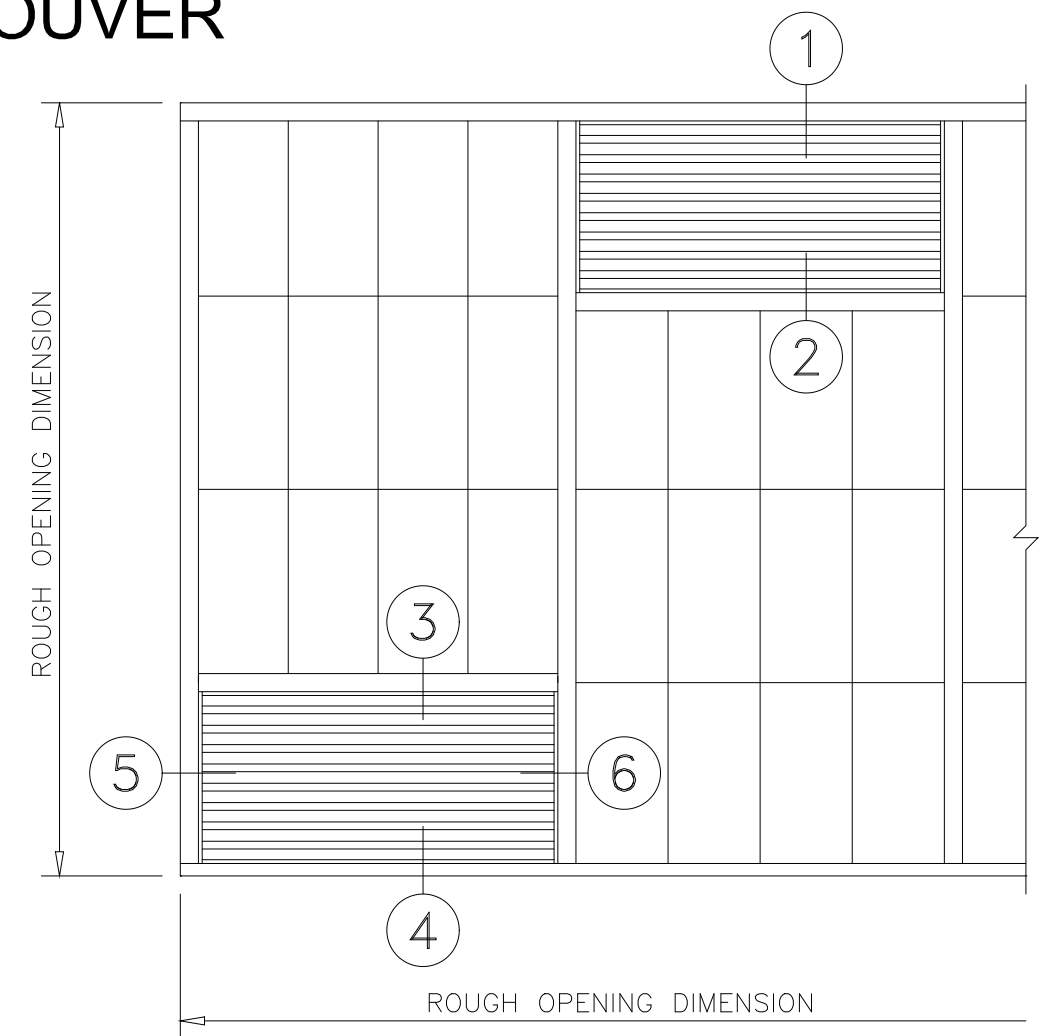


# KALWALL 2 3/4" [70mm] DAINABLE LOUVER



1. SPECIFICATIONS  
6063-T6 EXTRUDED ALUM  
ALL WELDED CONSTRUCTION
2. FINISH  
MILL OR C.R.F.
3. SCREENS  
(A) BIRD SCREENS  
3/4" [19mm] FLAT. EXPANDED  
ALUM. .051" [1.3mm THICK]  
(B) INSECT SCREENS  
18 X 16 ALUMINUM MESH
4. DIMENSIONS NOTE: RECTANGULAR ONLY  
WIDTH: MIN. 10" [254mm]  
MAX. 60" [1524mm]  
HEIGHT: MIN. 10" [254mm]  
MAX 96" [2438mm]  
BLADES SPACING: 2 1/16" [52mm] NOM.
5. FREE AREA  
48" [1219mm] W x 48" [1219mm] H 6.38 f<sup>2</sup> [593 m<sup>2</sup>], 40%
6. BEGINNING POINT OF WATER PENETRATION  
1,229.6 f/m (7,845 f<sup>3</sup>/m) [2391 m<sup>3</sup>/min (34.82 m<sup>3</sup>/min)]
7. PRESSURE DROP

	H <sub>2</sub> O	f/min	f <sup>3</sup> /min	m/min	m <sup>3</sup> /min
IN	.612" / 15.54mm	2,000.3	12,762	609.69	361.4
	.051" / 1.29mm	571	3,643	174	103.2
OUT	.439" / 11.15mm	2,000.5	12,763	609.75	361.4
	.051" / 1.29mm	680.2	4,340	207.32	122.9



**WALL ELEVATION**

